

Insulating Liner

For Combustible Enclosures

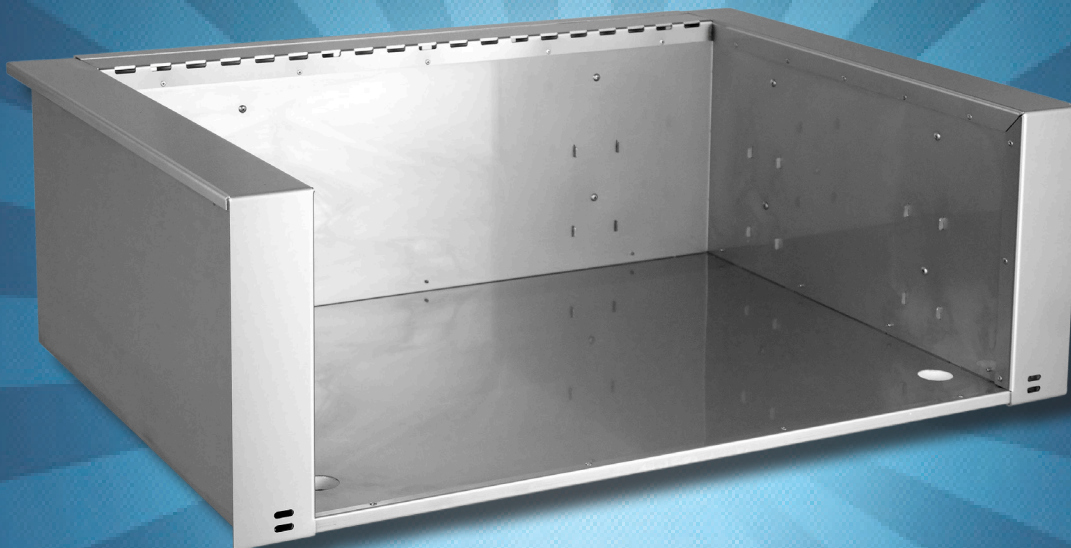
Insulating Liner for Fire Magic® Grills

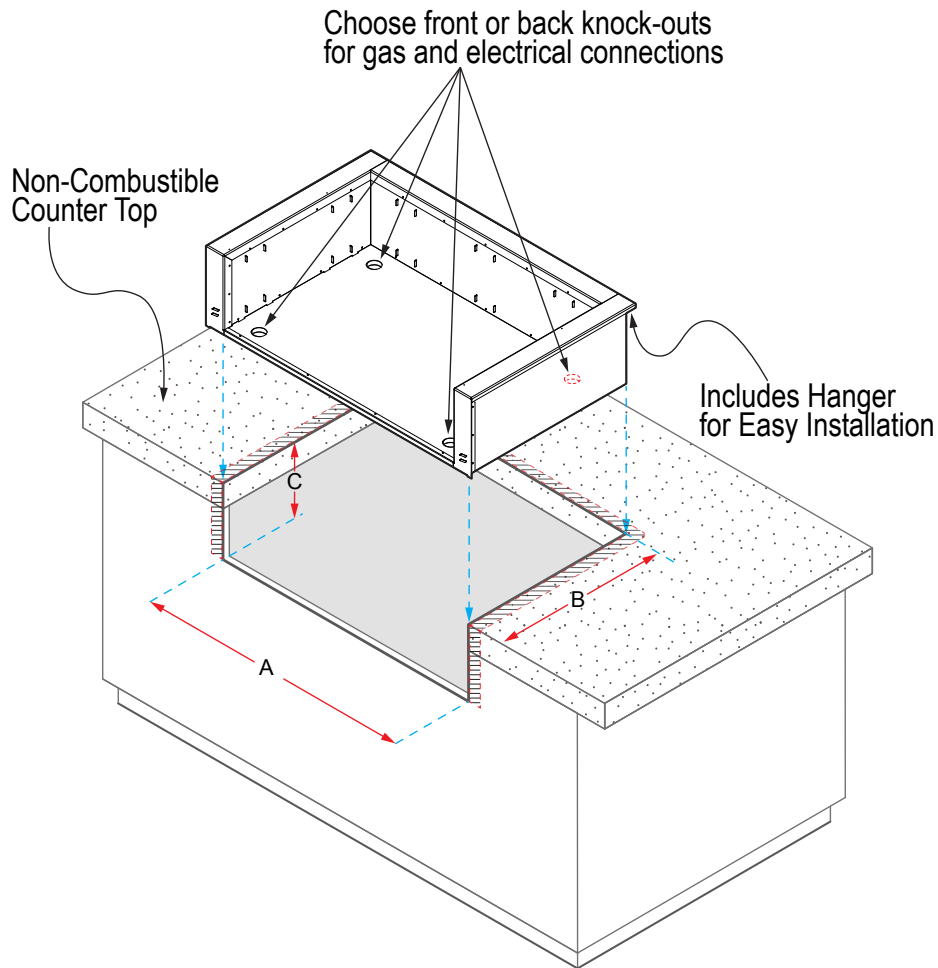
The insulating liner facilitates installation of built-in Fire Magic® grills into wood, composite or other combustible enclosures, when used with non-combustible countertops. Sizes are available for all Echelon, Aurora and Legacy Deluxe grills as well as Power Burners & Searing Stations.



Feature Highlights:

- Hanger for easy installation
- Reduced clearance
- No additional support beneath the liner required
- 304 stainless steel construction
- Pre-assembled in box





INSULATING LINER CUT-OUT DIMENSIONS (ECHELON, AURORA & CHOICE GRILLS)

GRILL MODEL	LINER PART #	OPENING REQUIRED		
		WIDTH A	DEPTH B	HEIGHT C
Echelon E1060i	3185-51	55 ¹ / ₄ "	26 ¹ / ₄ "	12 ¹ / ₄ "
Echelon E790i	3186-51	42 ¹ / ₂ "	26 ¹ / ₄ "	12 ¹ / ₄ "
Echelon E660i	3176-51	37"	26 ¹ / ₄ "	12 ¹ / ₄ "
Aurora A790i	3186-51	42 ¹ / ₂ "	26 ¹ / ₄ "	12 ¹ / ₄ "
Aurora A660i	3176-51	37"	26 ¹ / ₄ "	12 ¹ / ₄ "
Aurora A540i	23150-51	37"	22 ¹ / ₄ "	12 ¹ / ₄ "
Aurora A530i	23125-51	30 ³ / ₈ "	26 ¹ / ₄ "	12 ¹ / ₄ "
Aurora A430i	23130-51	30 ³ / ₈ "	22 ¹ / ₄ "	12 ¹ / ₄ "
Choice C540i	23150-51	37"	22 ¹ / ₄ "	12 ¹ / ₄ "
Choice C430i	23130-51	30 ³ / ₈ "	22 ¹ / ₄ "	12 ¹ / ₄ "

INSULATING LINER CUT-OUT DIMENSIONS (LEGACY & ACCESSORIES)

PRODUCT MODEL	LINER PART #	OPENING REQUIRED		
		WIDTH A	DEPTH B	HEIGHT C
Deluxe Grill	3100-51	28 ³ / ₈ "	19 ³ / ₄ "	12 ¹ / ₄ "
Power Burner	3278-51	23"	21 ¹ / ₈ "	12 ¹ / ₄ "
Searing Station	3287-51	18 ¹ / ₂ "	25"	12"

The information provided is for reference only. Detailed instructions are supplied with the liner for the model selected. Read those instructions carefully and completely before starting installation of the liner.